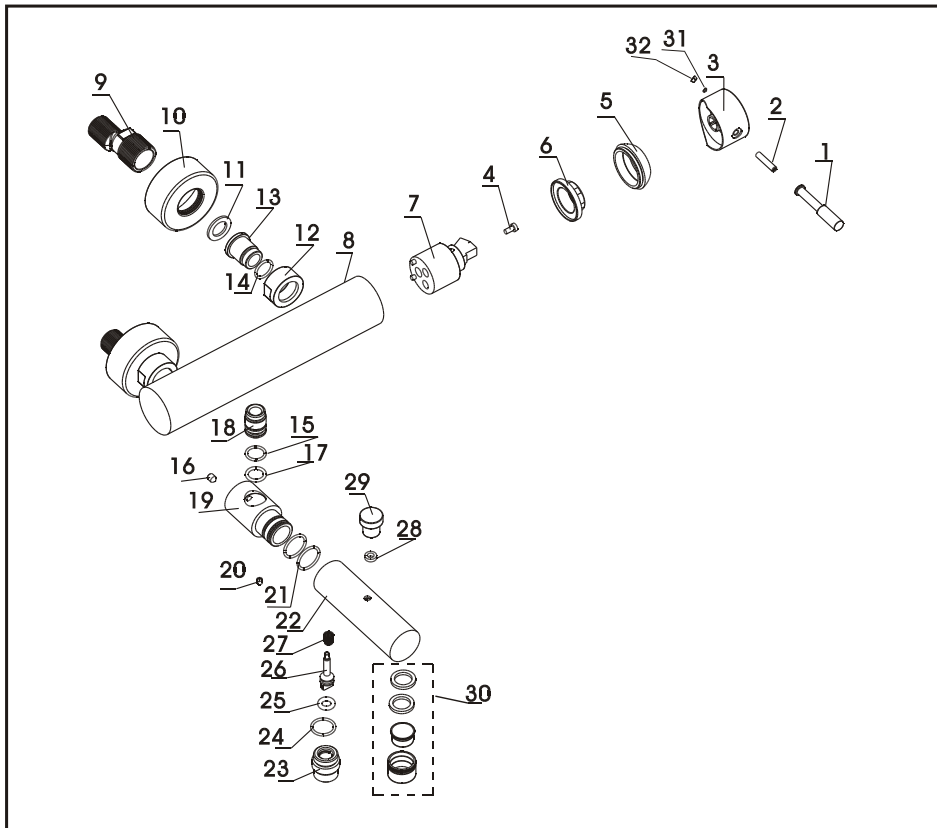




Bath/shower mixer

Installation Instruction

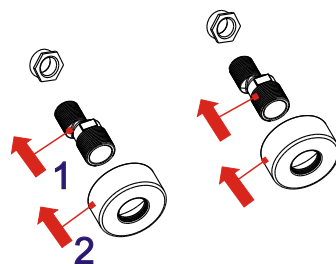
Please read this instruction carefully so as to avoid the installation difficulty.



Components List

No.	Component	Material	Quantity
1	Handle	BRASS	1
2	Female allen screw	S.S304	1
3	Cover for handle	BRASS	1
4	Cross-head screw	S.S304	1
5	Cap	BRASS	1
6	Cartridge fastener	BRASS	1
7	Ceramic cartridge		1
8	Main body	BRASS	1
9	S-union	BRASS	2
10	Escutcheon	BRASS	2
11	Flat washer	NBR	2
12	Joint nut	BRASS	2
13	Screw joint	BRASS	2
14	O-ring	NBR	2
15	O-ring	NBR	1
16	Female allen screw	S.S304	1
17	O-ring	NBR	1
18	Screw for handle	BRASS	1
19	Brass tube	BRASS	1
20	Female allen screw	S.S304	1
21	O-ring	NBR	2
22	Spout	BRASS	1
23	Union for hose	BRASS	1
24	O-ring	NBR	1
25	O-ring	NBR	1
26	Diverter rod	BRASS	1
27	Spring shim	S.S304	1
28	Y-seal	NBR	1
29	Diverter knob	BRASS	1
30	Aerator		1
31	Female allen screw	SUS304	1
32	Ornate plug	ABS	1

Installation Step

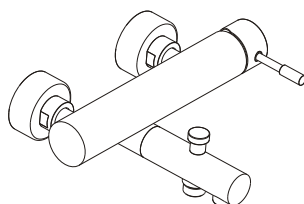
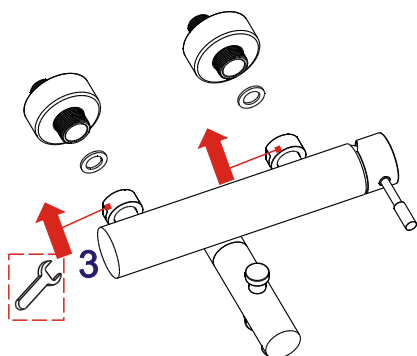


1

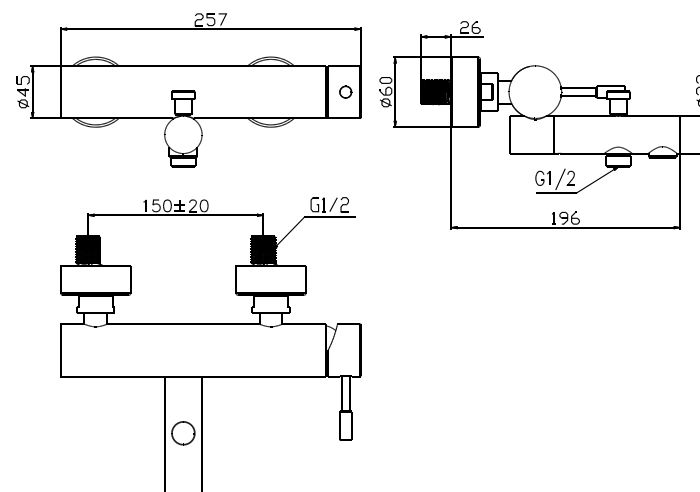
2

3

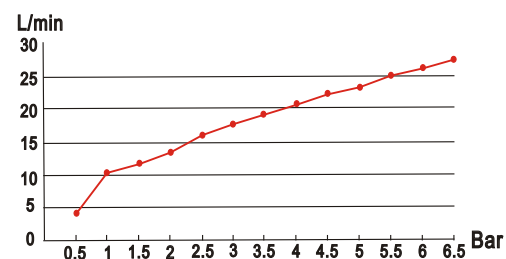
4



Installation Fig



Flow rate Curves



Test pressure: 1.6MPa (16bar)

Flow pressure:

Min 0.05MPa

Max 1.60MPa

Recommended pressure:

0.1MPa to 0.8MPa (1 to 8 bar)

Note

- 1.Ensure to clean the water supply pipe before installing to avoid being jammed.
- 2.The cold-water supply must be connected on the right and the hot-water supply on the left.
- 3.Check the installing dimension according to the Figure and ensure it is installed correctly.
- 4.Hot-water inlet must not be over 80°C.